



465 Arctic Fox Drive

Epworth, IA 52045 • Single Family • For Sale • Closed

\$510,000

4 Beds | 4 Baths | 3,060 Sqft | 6 Cars



Property Highlights

- Elementary School: *Epworth of W.D.*
- High School: *Western Dubuque-Epworth*
- Porch / 3 Season
- Patio
- Style: *1 Story*
- Middle School: *Drexler-Farley of W.D.*
- Financing Options: *Cash to Sellers Ruhl Mortgage*
- Heating / Cooling: *Central*
- Property Type: *Single Family, Residential*
- MLS #: *146955*

Description

Zero entry 1 story walk-out ranch on 0.54 acre lot located in Western Dubuque District. 4 Bedroom (5th non conforming) Main floor master Ste, 3 1/2 baths include 2 walk-in showers and granite vanity countertops. Granite kitchen, island counters, large walk-in pantry, Lg main floor laundry, lower level 1200 sq finished, 34' x 12' storage area, 3 car up with 24' x 35' capped garage. Deck, patio and a Rainbow playset in backyard. \$530,000.

General Information

Bathrooms	4 (3 full, 1 half)	Bedrooms	4
County	Dubuque County	Elementary School	Epworth of W.D.
High School	Western Dubuque-Epworth	Lot Size Acres	0.54 acres
Middle/Junior High School	Drexler-Farley of W.D.	Style	1 Story
Subdivision	Lot 36 Fox Ridge-phase 1;	Taxes (Est)	\$6,271
Year Built	2018		

Listed by Pamela Helmer, Ruhl & Ruhl Realtors.

Data provided by East Central Iowa MLS.



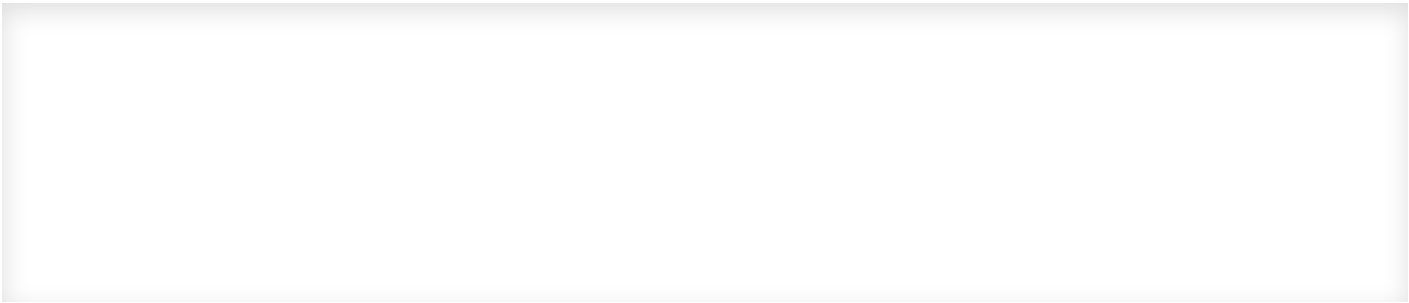
Room Information

Bedroom Level 1	m Level	Bedroom Level 2	m Level
Bedroom Level 3	m Level	Bedroom Level 4	Ll Level
Dining Room	m Level	Kitchen	m Level
Living Room	m Level		

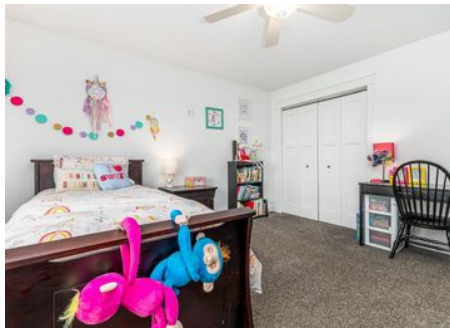
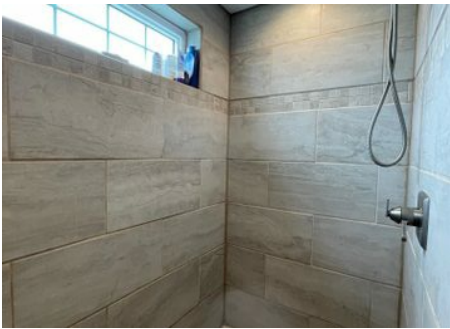
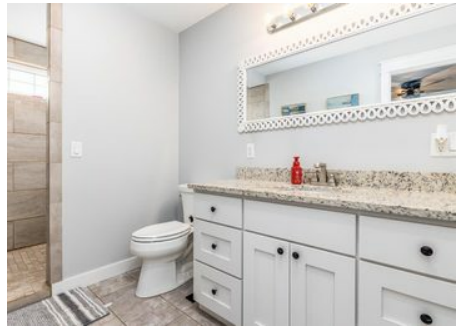
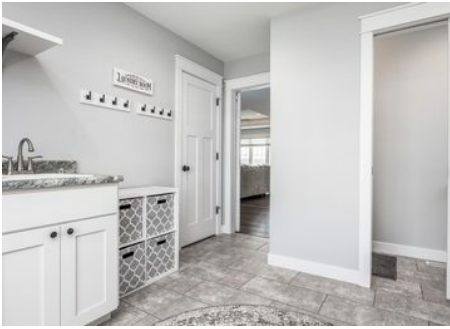
Property Features

Appliances	Dishwasher, Garbage Disposal, Microwave, Range/Oven, Refrigerator, Trash Compactor	Basement	Full
Cooling	Central Air	Exterior	Patio, Deck, Porch, Walkout, City View, Public Sidewalk, Playground Equipment, Invisible Fence, Invisible Fence Equipment
Heating	Forced Air	Roofing	Asp/Composite Shngl

Location | 465 Arctic Fox Drive, Epworth, IA 52045











<https://www.runinomes.com/146755>